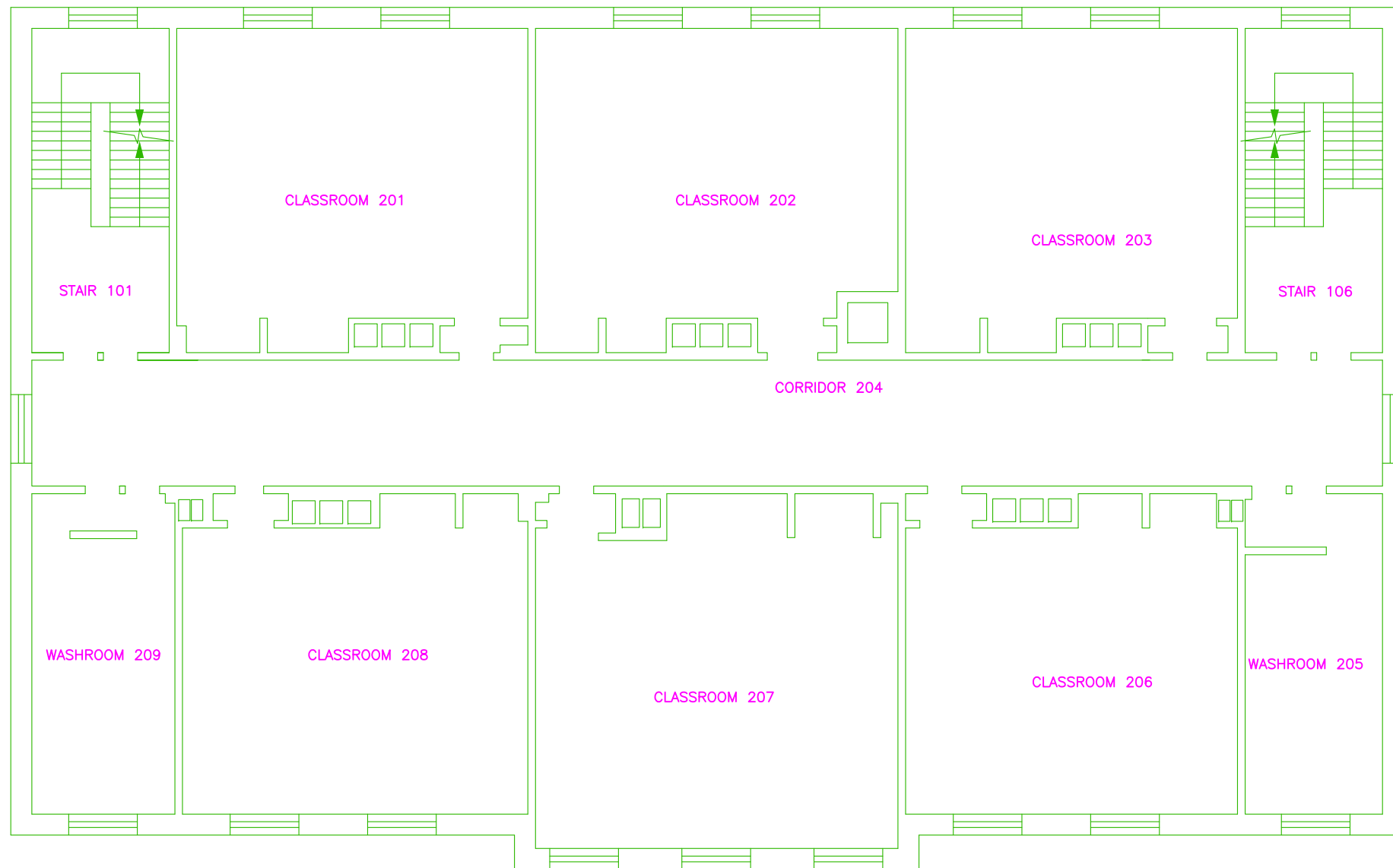


LEGEND



SCALE: 10FT

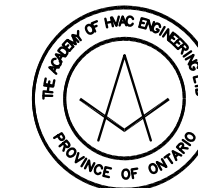
ENVELOPE DETAILS:

FLOOR HEIGHT- 14FT
WINDOW HEIGHT- 5FT

WALLS: 1" STUCCO
8" CONCRETE BLOCK
R-11, 3 1/2" BATT INSULATION
5/8" GYPSUM BOARD

ROOF: BUILT-UP ROOFING
1/2" FIBERBOARD SHEATHING
R-15, 3" INSULATION BOARD
6" LIGHTWEIGHT CONCRETE SLAB

WINDOWS: 1/4" CLEAR DOUBLE GLASS OPERABLE
IN ALUMINUM FRAME WITH THERMAL BREAKS



The Academy of HVAC
Engineering Ltd.

Project title

PRIMARY SCHOOL IN WINDSOR

Checked by

Scale NTS

ID

Date

Sheet title

SECOND FLOOR

Drawing no.

M-2