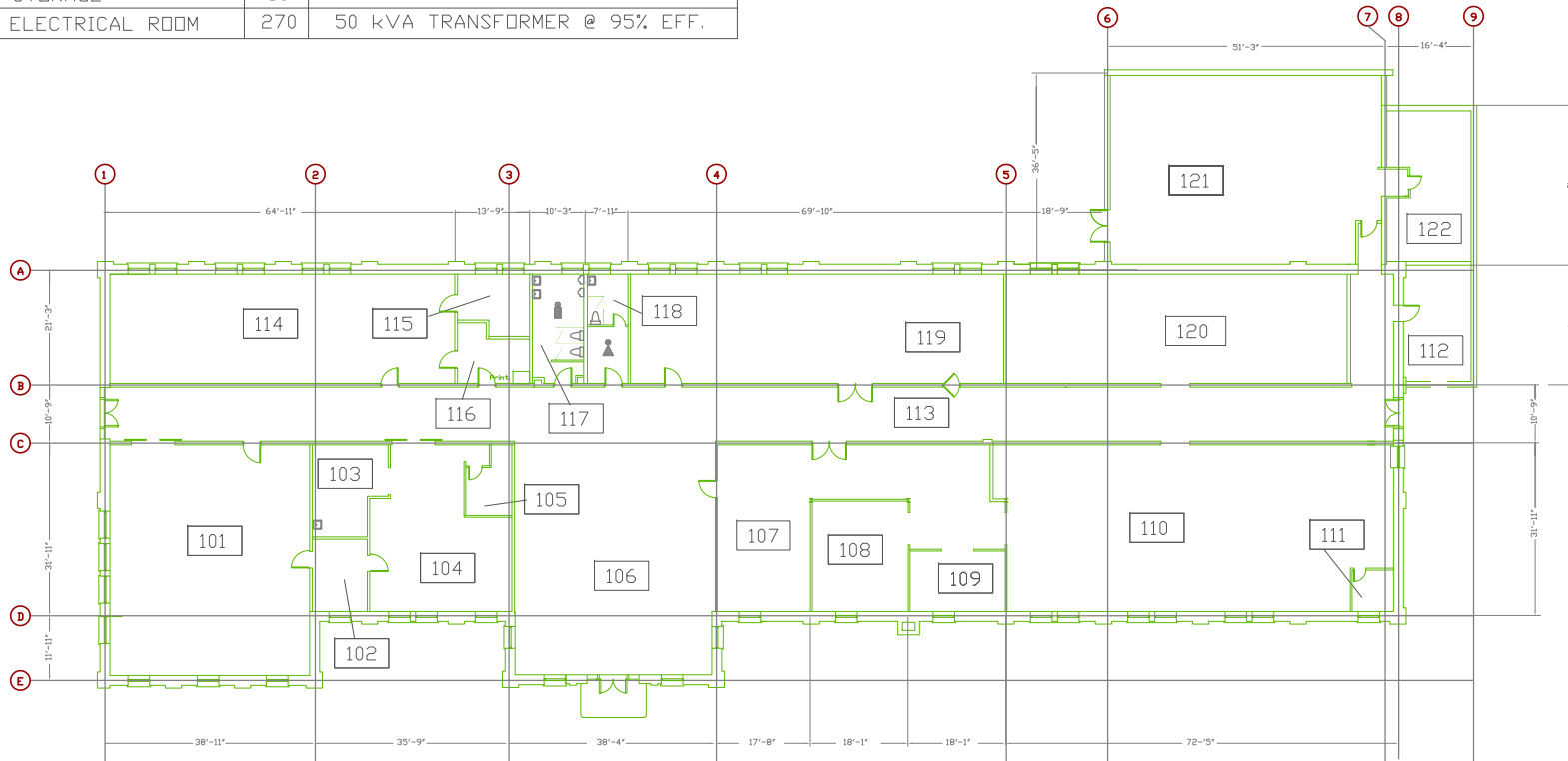


#	SPACE	AREA FT2	EQUIPMENT
101	ASSEMBLING ROOM	1580	SENS. 4000 BTU/HR, 10 OCCUPANTS
102	WASH DOWN ROOM	140	
103	DARK ROOM	210	SENS. 1000 BTU/HR
104	SCREEN ROOM	670	1 PC WITH 17" MONITOR
105	OFFICE	90	1 PC WITH 17" MONITOR
106	VESTIBULE	1580	
107	ARCHIVES	1030	1 PC WITH 17" MONITOR
108	PURCHASING	370	1 PC WITH 17" MONITOR
109	STORAGE	200	
110	CONTROL CENTER	2120	20 PC WITH 17" MONITOR
111	STORAGE	60	
112	ELECTRICAL ROOM	270	50 kVA TRANSFORMER @ 95% EFF.

#	SPACE	AREA FT2	EQUIPMENT
113	CORRIDOR	2580	
114	LETTERING ROOM	1290	2 PC WITH 17" MONITOR
116	PHOTOCOPY RM.	130	DESKTOP COPIER
117	WASHROOM	190	
118	WASHROOM	150	
119	LUNCH & TRAINING RM.	1400	ELEC. OVEN WITH HOOD, COFFEE MAKER 30 OCCUPANTS
120	DECORATING	1280	SENS. 6000 BTU/H
121	MECHANICAL ROOM	1700	
122	BOILER ROOM	440	



LEGEND

- | | |
|--|---|
| | - AIR DIFFUSER CHARACTERISTICS:
SIZE-NECK DIAMETER IN INCHES
FLOW-AIR VOLUME IN CFM |
| | - RECTANGULAR AIR OUTLET, SUPPLY |
| | - RECTANGULAR AIR OUTLET, RETURN |
| | - REHEAT COIL |
| | - FIRE DAMPER |
| | - THERMOSTAT OR |
| | - CONTROL WIRE |
| | - EXHAUST FAN |
| | - AIR TRANSFER |
| | - SOUND ATTENUATOR |
| | - BASEBOARD HEATER |
| | - HOT WATER SUPPLY |
| | - HOT WATER RETURN |
| | - HOT WATER REVERSE RETURN |
| | - REFRIGERANT SUCTION PIPE |
| | - REFRIGERANT DISCHARGE PIPE |
| | - CONDENSATE PIPE |
| | - GAS PIPE |
| | - CIRCUIT BALANCING VALVE |
| | - 3-WAY VALVE |
| | - 2-WAY VALVE |
| | - GATE VALVE |
| | - BALL VALVE |
| | - BUTTERFLY VALVE |
| | - CHECK VALVE |



The Academy of HVAC Engineering Ltd.

Project title
GENERAL SERVICES BUILDING

Checked by _____ Scale NTS

ID _____ Date _____

Sheet title
ROOM LAYOUT

Drawing no.
M-1A